

novacolor™  
I colori dell'Architettura

# marmorino<sub>ks</sub>

Finiture in calce per esterni ed interni - Mineral finishes for exteriors and interiors



Finiture in calce per esterni ed interni  
Mineral finishes for exteriors and interiors

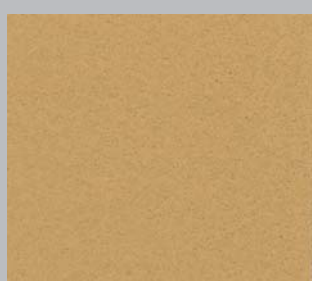


marmorino<sup>ks</sup>

novacolor™  
I colori dell'Architettura



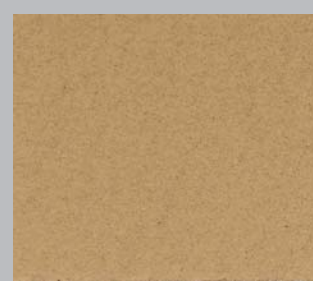
MKS 600\*



MKS 603\*



MKS 605



MKS 606\*



MKS 601\*



MKS 604\*



MKS 607



MKS 602\*



Marmorino KS MKS 509 a spatola con Cera Wax Gold  
Marmorino KS MKS 509 trowel application with Cera Wax Gold



MKS 608



MKS 610



MKS 617



MKS 611



MKS 613



MKS 615



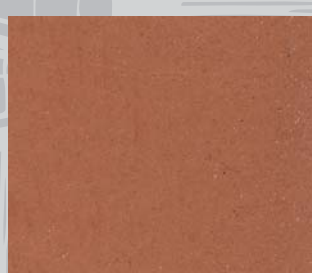
MKS 618



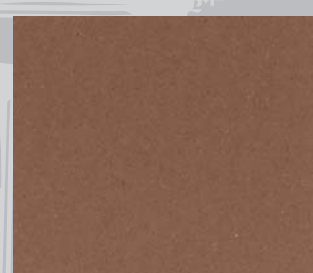
MKS 612\*



MKS 614\*



MKS 616\*



MKS 619\*





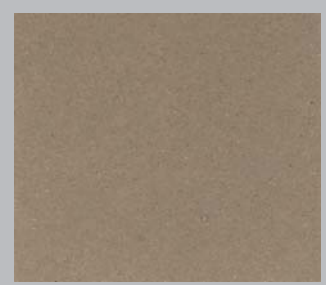
MKS 620\*



MKS 622\*



MKS 625\*



MKS 628\*



MKS 621



MKS 623\*



MKS 626



MKS 629



MKS 624



MKS 627



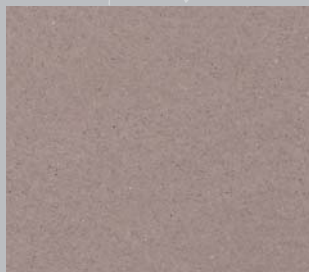
MKS 630



MKS 633



MKS 631



MKS 634



MKS 636



MKS 638\*



MKS 632\*



MKS 635\*



MKS 637\*



MKS 639\*



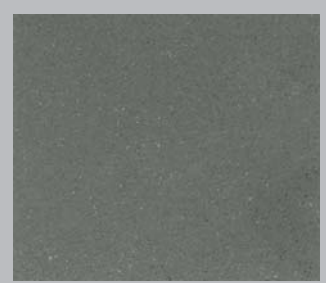
MKS 640\*



MKS 643



MKS 645\*



MKS 647\*



MKS 641



MKS 644



MKS 646



MKS 648



MKS 642



MKS 649

I colori contrassegnati con \* non sono utilizzabili in esterni.

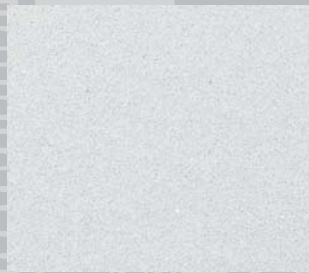
**MARMORINO KS** è a base di calce: sono possibili leggere variazioni di colore tra la cartella e lotti diversi di produzione. Si consiglia di utilizzare sempre un unico lotto per ultimare un cantiere.

*Colours marked with \* may NOT be used outdoor.*

**MARMORINO KS** contains lime therefore slight colour variations between colour card and different batch numbers may always occur. It is highly recommended not to use different batch numbers to finish up the same surface.



MKS 650\*



MKS 653



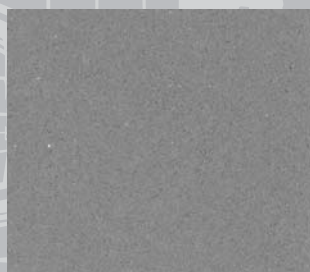
MKS 658



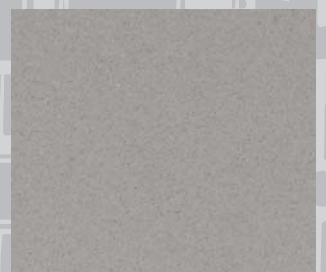
MKS 651\*



MKS 654



MKS 656



MKS 659



MKS 652\*



MKS 655\*



MKS 657\*



MKS 660\*

# novacolor™

I colori dell'Architettura

marmorino<sup>ks</sup>

MARMORINO KS è un grassello di calce, mescolato con polveri di marmi italiani, addensanti cellulosici, rinforzanti acrilici ammessi nella pratica del restauro, e colorato con terre naturali ed ossidi. MARMORINO KS produce effetti classici, trasparenti e vibranti, tipici delle coloriture del passato. L'effetto finale è particolarmente gradevole con una superficie morbida e patinata, tipica delle finiture a calce.

#### PREPARAZIONE DEL SUPPORTO

MARMORINO KS è a base di calce e deve quindi essere applicato su fondi compatibili: intonaci a base di calce aerea, di calce idraulica o di malta bastarda con un contenuto di almeno il 30% di calce.

Su supporti di altra natura è necessario l'uso di consolidanti quali **Decofix** (fissativo murale a base di micro-emulsioni) o di **Novaprimer** (primer acrilico).

#### APPLICAZIONE

Applicare MARMORINO KS in due mani con spatola americana inox; a prodotto appassito "lucidare" con spatola inox. E' possibile proteggere il supporto con una mano di **CERA**, disponibile nelle versioni **Neutra, Gold, Silver e Bronze**.

#### I CONSUMI

MARMORINO KS: 0,8 - 1 Kg/m<sup>2</sup> circa, in due mani.

MARMORINO KS is a lime-based smooth coating containing lime putty, Italian marble powder, reinforced acrylics and coloured with natural earth pigments and oxides.

MARMORINO KS produces transparent and vibrant textures, typical of the past. The surface looks completely smooth and polished with a sort of silky-like effect.

#### SUBSTRATE PREPARATION

MARMORINO KS contains lime. Therefore, if applied over substrates of the same nature, such as air-hardening lime plasters, hydraulic lime plasters, mortars with minimum 30% of lime, requires no previous treatment.

On other kinds of substrates a previous sealing coat is usually recommended, such as **Decofix** (wall sealer based on microemulsions) or **Novaprimer** (acrylic primer).

#### APPLICATION PROCEDURE

MARMORINO KS is applied in 2 coats, with a stainless steel trowel. The second coat is first smoothed down with a felt/sponge trowel and then completely levelled with the stainless steel trowel. A final coat of **CERA**, decorative wax available as **Clear, Gold, Silver and Bronze**, improves the washability and slightly increases the final gloss of the material.

**YIELD:** 0,8 - 1 Kg/m<sup>2</sup> approximately, in two coats.



## novacolor.it

NOVACOLOR s.r.l.  
47121 Forlì - Italia - Via A. Spallicci, 16  
Tel. +39 0543 401840 - Fax +39 0543 414585  
info@novacolor.it

AZIENDA CON SISTEMA DI GESTIONE QUALITÀ  
CERTIFICATO DA DNV = ISO 9001 =  
COMPANY WITH QUALITY SYSTEM  
CERTIFIED BY DNV = ISO 9001 =

Made in Italy



NOVACOLOR is committed to reduce the environmental impact by producing friendly materials.